

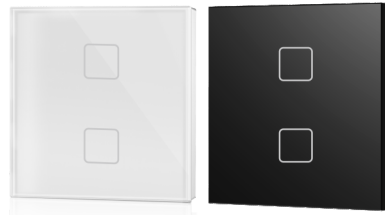
Zigbee 3.0 Wall Mounted Touch Panel

Model No.: TS1(WZS), TS2(WZS), TS3(WZS)

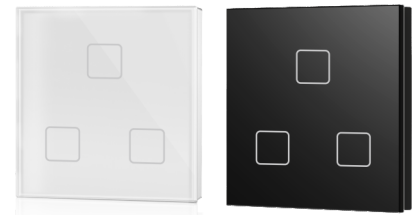
1-3 button/Zigbee 3.0/Glass touch panel/AC input



TS1(WZS)



TS2(WZS)



TS3(WZS)

Features

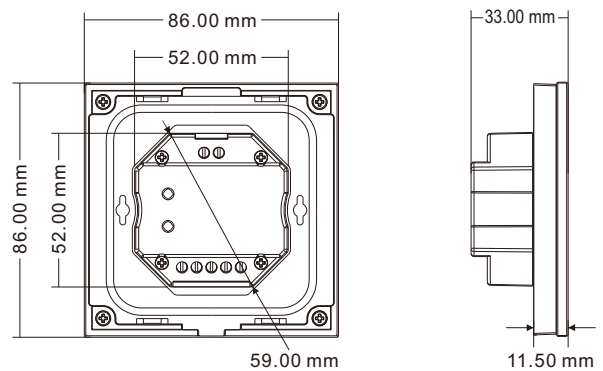
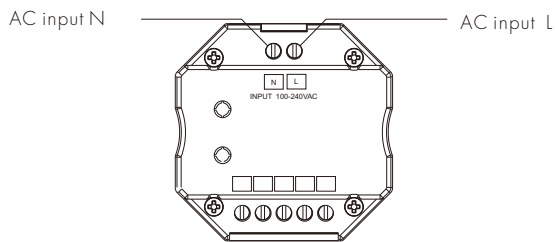
- 1-3 button touch panel remote with scene recall function.
- Built-in Tuya Zigbee 3.0 remote module, supports scenario linkage and one-click execution.
- Set scene function through Tuya / Smart life APP.
- Ultra sensitive high strength glass touch panel.
- Each button with blue LED indicator.
- Provide a variety of Chinese/English scene button pasters, which can flexibly define the functions of each button.
- White & Black glass panel available.

CE RoHS LVD RED

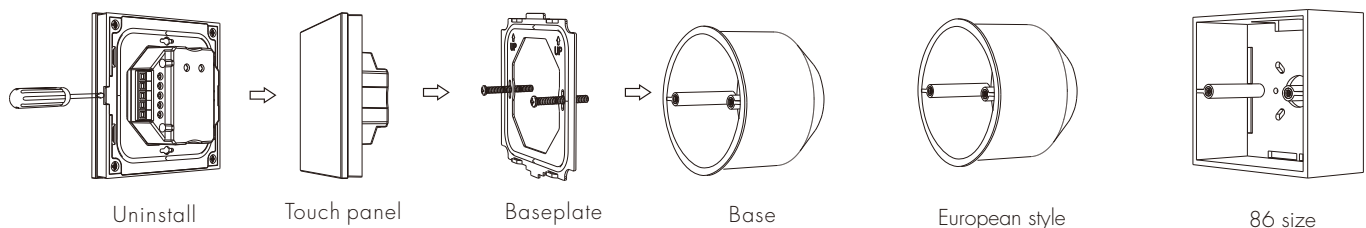
Technical Parameters

Input and Output		Safety and EMC		Environment	
Input voltage	100-240VAC	EMC standard (EMC)	ETSI EN 301 489-1 V2.2.3	Operation temperature	Ta: -30°C ~ +55°C
Input current	Max 0.1A		ETSI EN 301 489-17 V3.2.4	Case temperature (Max.)	Tc: +65°C
Output signal	Zigbee 3.0	Safety standard(LVD)	EN 62368-1:2020+A11:2020	Package	
Dimming data		Radio Equipment(RED)	ETSI EN 300 328 V2.2.2	Size	L112x W112 x H50mm
Input signal	Touch key	Certification	CE,EMC,LVD,RED	Gross weight	0.223kg
Remote distance	30m(Barrier-free space)	Warranty	5 years		

Mechanical Structures and Installations

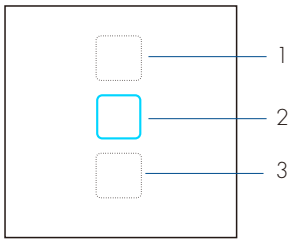


Installation diagram:



Key function

- TS1(WZS) One button switch panel



1: Virtual Key 1

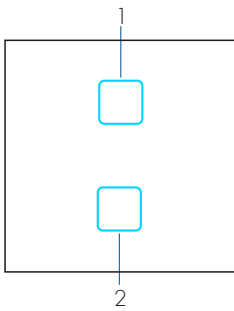
2: Switch Key

3: Virtual Key 3

Short press the switch button to turn on/off the light (all light devices add to this panel), the blue indicator flashes 6 times.

Before use the scene switch panel, please edit the scene setting through Tuya / Smart life APP firstly.

- TS2(WZS) 2 scene panel



1: Scene 1

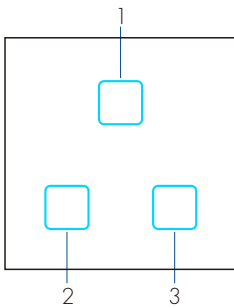
2: Scene 2

Short press the scene button to recall the corresponding scene, the blue light flashes 6 times.

Press and hold the scene button for 3 seconds to close the corresponding scene(only for group control), the blue light flashes 6 times.

Before use the scene panel, please edit the scene setting through Tuya / Smart life APP firstly.

- TS3(WZS) 3 scene panel



1: Scene 1

2: Scene 2

3: Scene 3

Short press the scene button to recall the corresponding scene, the blue light flashes 6 times.

Press and hold the scene button for 3 seconds to close the corresponding scene(only for group control), the blue light flashes 6 times.

Before use the scene panel, please edit the scene setting through Tuya / Smart life APP firstly.

APP Operating Instructions

1. Network pairing

- Download the Tuya / Smart life APP and register an account, search and add the Tuya / Smart life Zigbee gateway device.
- For TS1(WZS): Press and hold the "Virtual Key 1" and "Virtual Key 3" button until the LED indicator light flashes.
For TS2(WZS): Press and hold the "Scene 1" and "Scene 2" button until the 2 LED indicator light flashes.
For TS3(WZS): Press and hold the "Scene 1" and "Scene 2" button until the 3 LED indicator light flashes.
Under the gateway, you can find WZS-Scene Panel device in Tuya / Smart life APP.
After successful network pairing, the LED indicator light will be on for 2 seconds and then off.
- Under the gateway, search and add one or more ZBS-DIM, ZBS-CCT, ZBS-RGB, ZBS-RGBV, ZBS-RGB+CCT light devices.
- Unpair scene panel: Re-operate the pairing action to unpair.

2. Remote association and scene settings

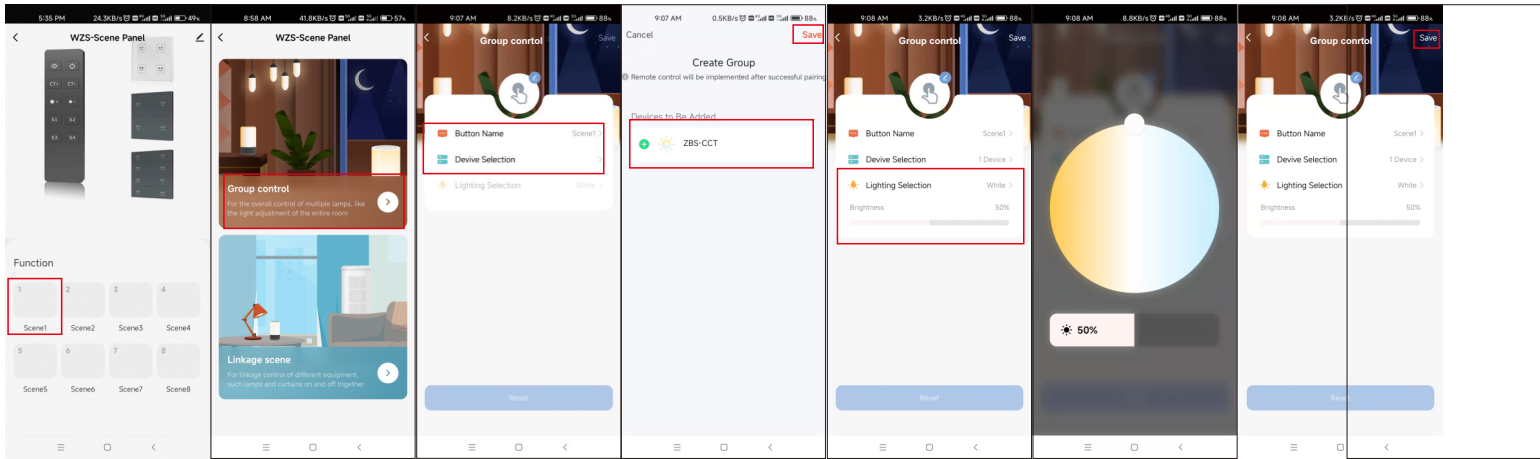
There are 8 scenes in the Tuya / Smart life APP, which can be set to group control or linkage scenes.

group control is used for the overall control of multiple lamps, like the light adjustment of the entire room.

Linkage scene is used for linkage control of different equipment, such lamps and curtains on and off together.

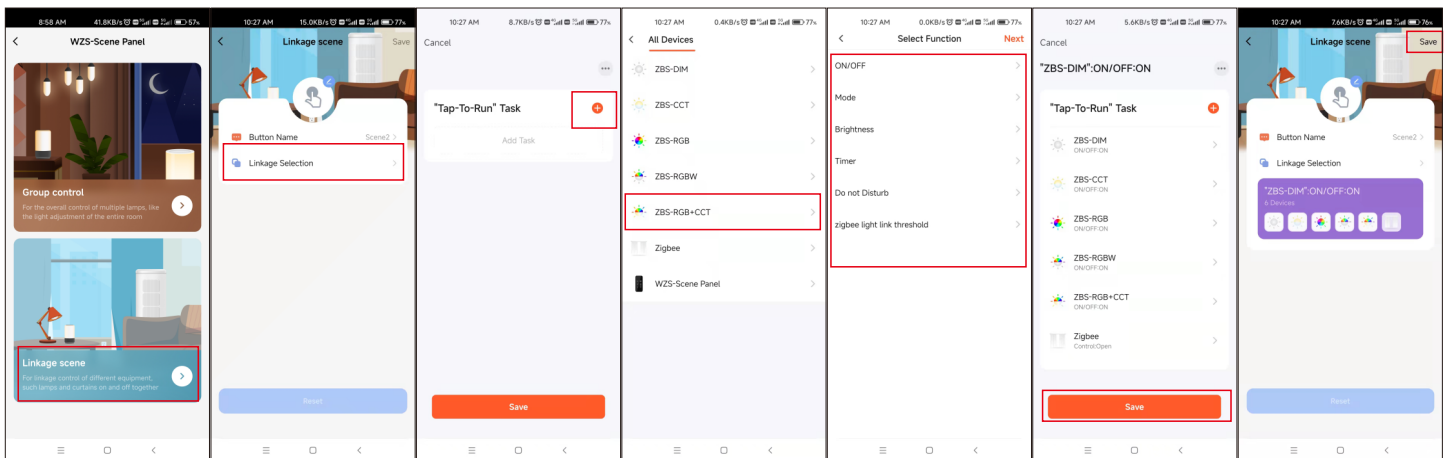
Example 1, set scene 1 for synchronous light control of the whole room:

- (1) Select scene 1 and open the group control settings.
- (2) You can change the scene name, add one or more devices, adjust brightness and color, then save it.
- (3) After successful setting, you can use the remote to control these lamps directly.



Example 2, set scene 2 to set up a scenario where different lamps or curtains are controlled together with different color or on/off state.

- (1) Select Scene 2 and open the linkage scene settings.
- (2) You can change the scene name, add "one-click execution" tasks, select the devices that need to be linked, save the required functions, such as ON/OFF, mode, brightness and color temperature.
- (3) After successful setup, you can use the remote to directly control all linked devices to the desired scene.



Note:

- The scene 1-3 in Tuya / Smart life APP is correspond to the scene 1-3 button on the scene panel.
- You can select one scene button to set ALL OFF linkage scene function to turn off all lights.
- To delete the scene function, you can select "Reset" in the scene settings.
- TS1 (WZS) can only switch on/off all lighting devices added to the "Light Scene" setting in the same scene.