

300W 24V DC Indoor Power

MODEL HS-24E300
INPUT 180~250V AC
OUTPUT 24V DC 12.5A 300W

Features:

- Slimline design with aluminum housing
- Protections: Short circuit/Over load
- Designed for indoor signage, decoration or lighting applications
- Small size, light weight, easy installation

SELV    

INPUT

INPUT VOLTAGE 180~250V AC
(Refer to the derating curve of "Loading and Input voltage")

FREQUENCY RANGE 50Hz

EFFICIENCY 89%

AC CURRENT $\leq 2.4A@230VAC$

AC INRUSH CURRENT 46A@230VAC

LEAKAGE CURRENT 0.25mA/230VAC

PROTECTION

OVER LOAD 115%-150 rated power,
Protection Type:auto-recovery,
after fault condition is removed

SHORT CIRCUIT Protection Type:recovery
automatically after fault condition
is removed

SAFETY & EMC

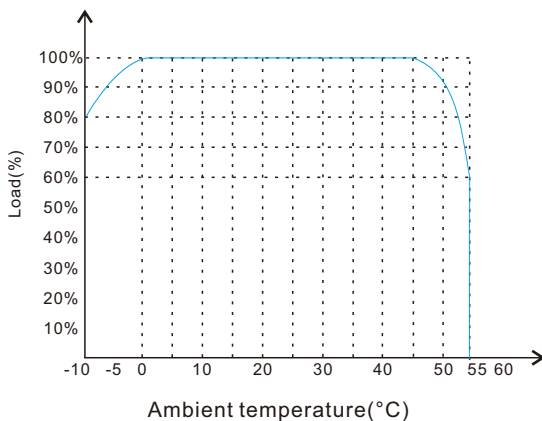
SAFETY STANDARDS IEC61347 A1 +A14

EMC EN 55015;EN 61547;EN 61000-3-2;
EN 61000-3-3

WITHSTAND VOLTAGE I/P-FG:1.5KV AC I/P-O/P:3.0KV AC

ISOLATION I/P-O/P:> 100M Ohms/500VDC/25°C
/75%RH

LOADING AND AMBIENT TEMPERATURE



OUTPUT

DC OUTPUT 24V

OUTPUT CURRENT 12.5A

RATED POWER 300W

VOLTAGE TOLERANCE $\pm 5\%$

RIPPLE NOISE 200mV P-P(Max.)

SETUP RISE TIME $\leq 2000mS(Max.)/230VAC$

ENVIRONMENT

OPERATING TEMPERATURE -25°C~+40°C
(Refer to the derating curve of "Loading and Ambient temperature")

OPERATING HUMIDITY 5%~95%

STORAGE TEMPERATURE -35°C~+65°C

WEIGHT & PACKING

PRODUCT DIMENSION 285x60x30.5mm

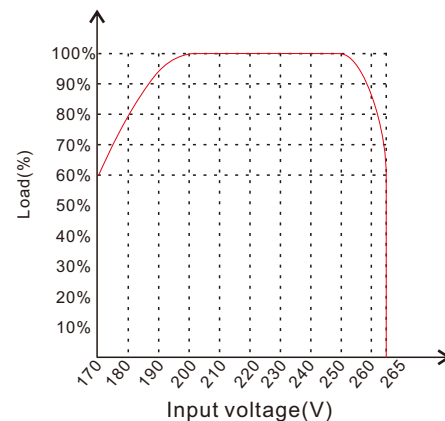
NET WEIGHT 0.56KG

QUANTITY/CARTON 25PCS

PACKING DIMENSION 345x215x307mm

GROSS WEIGHT 12.5KG

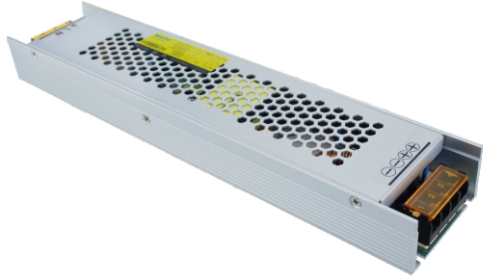
LOADING AND INPUT VOLTAGE



INSTALLATION GUIDE

- It is recommended to use no more than 80% of the rated load of a power supply, to have tolerance for the power increase of LED modules or strips when their running temperature goes up.
- It is very important to have enough ventilation for a power supply to avoid overheating.
- Do not install the power supply in a closed place, or near flammable or explosive objects, or in a place easily flooded.
- Choose wires with correct AWG or copper area for electrical connection according to the rated current.

OVERVIEW



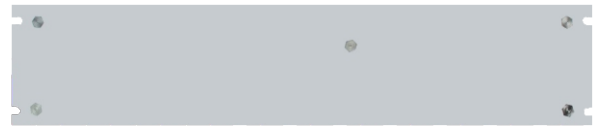
TOP VIEW



FRONT VIEW



BOTTEM VIEW



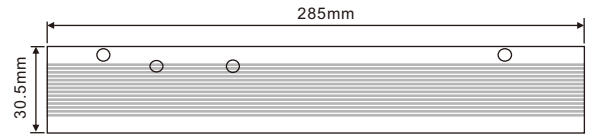
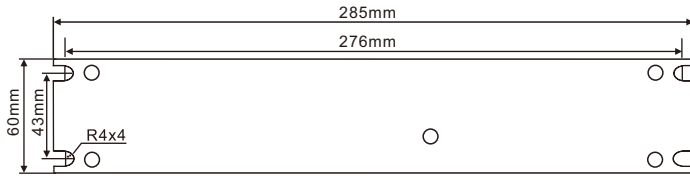
AC INPUT CONNECTION



DC OUTPUT CONNECTION



PRODUCT DIMENSIONS



INNER BOX



OUTER CARTON

